

**BlackBaller "Pro" v3.0.0**  
**By Killer Mobile Software LLC**  
**www.killermobile.com**  
**info@killermobile.com**



**BlackBaller Pro is an easy to use Call & Message (SMS/MMS) handling application. The program allows you to setup preferences as how to handle calls/SMS/MMS from different numbers. You can choose to filter calls, auto respond via SMS or use the application like an answering machine.**

**\*\*\*\* You can purchase a license for continued use directly from [www.killermobile.com](http://www.killermobile.com) \*\*\*\***

**BLACKBALLER** 8

**Call Filter.**

**SMS Filter.**

**Anti-Spam.**

Another Killer App by **KILLER MOBILE** SOFTWARE DEVELOPMENT

-----  
**COMPATABILITY**  
-----

***All Series 60 (S60) 3rd & 5th Edition Devices are supported.***

Nokia 3250, 5500, 5700, 6110, 6120, 6121, 6210, 6220, 6290, E50, E51, E60, E61, E61i, E62, E63, E65, E66, E70, E71, E75 E90, N69, N71, N73, N75, N76, N77, N78, N79, N80, N81, N81 8GB, N82, N85, N86, N91, N92, N93, N95, N95 8GB, N96, 5320 XM, 5320 XM, 5800 Xpress Music E52, E55, 5530 xpress, 6710 Navigator, 6730 Classic, N97, X6, Sony Ericson Satio, LG KS10, Samsung SGH-G810, Samsung INNOV8, Samsung SGH-L870

-----  
**INSTALLING/UNINSTALLING**  
-----

The application should be installed the same as all native Symbian applications. Transfer the application to your device via Bluetooth, USB, etc, or Download OTA and you will be prompted automatically to install the application.

\* **NOTE:** Install to your internal device memory for optimum performance & stability. Save clips to your memory card.

-----  
**OVERVIEW**  
-----

BlackBaller Pro is an easy to use Call & Message (SMS/MMS) handling application. The program allows you to setup preferences as how to handle calls/SMS/MMS from different numbers. You can choose to filter calls, auto respond via SMS or use the

application like an answering machine.

**With BBPro you can:**

- > Filter Calls & SMS's (Blacklist)
- > Auto Reply via SMS to an incoming call or SMS with a pre-formatted message
- > Play a voice message to the caller
- > Setup an on-device answering machine
- > View full logs of each Filtered event
- > Restore Filtered SMS's to the native messaging app
- > Create unique Voice clips for each caller
- > And much, much more!

**BBPro is highly configureable:**

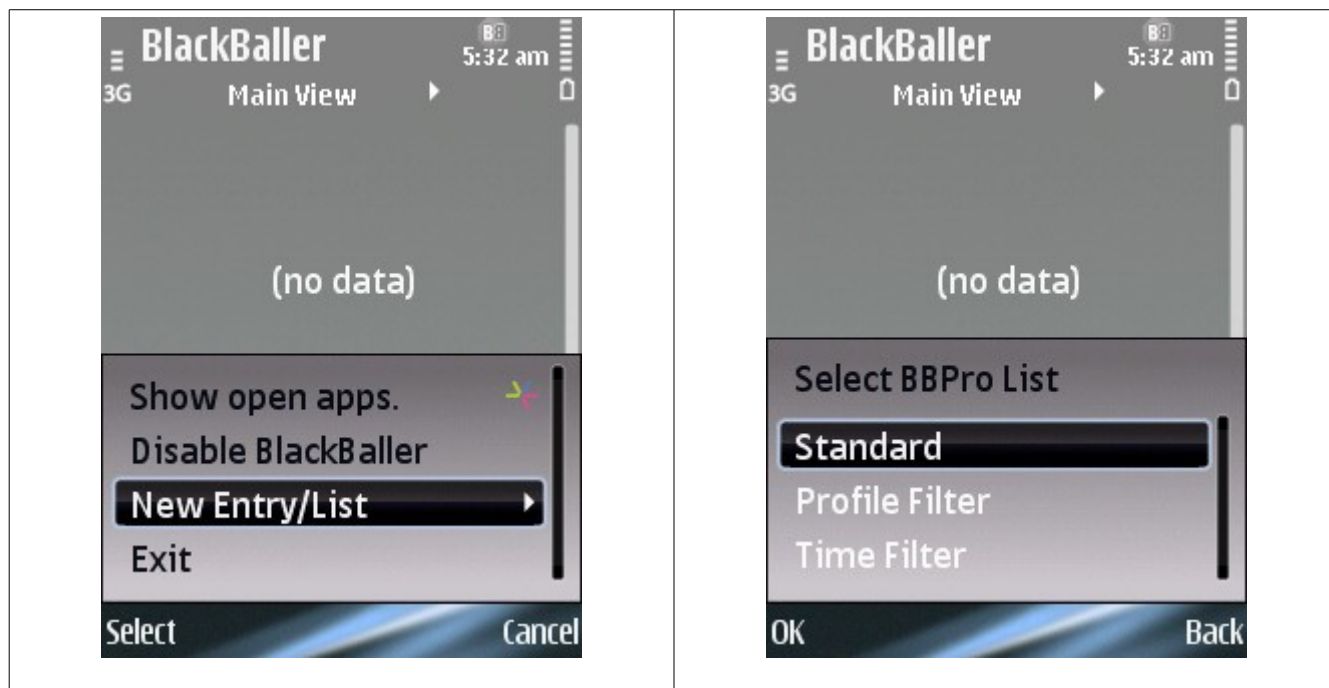
- > Set how long the device should ring before taking over the call
- > Allows you to interrupt the app even after it takes over the call
- > Set the SMS auto-reply to be sent once per day or after every SMS
- > Be prompted each time you manually reject a call to add this number to your blacklist
- > Create lists that include all Contacts or All non Contacts or even All callers, use patterns with wildcards for the ultimate in flexibility!

-----  
**NOTE: Install to your internal device memory for optimum performance**  
-----

Easily create your filters using number(s) from your Phone book, Call Logs, input them manually or utilize patterns (even use wildcards). You can also create a Killer Mobile exclusive "BB Pro List" and group your contacts, patterns or numbers into one single list and setup preferences for the entire list. All the calls/messages from those numbers will be handled as per the preferences setup in the BB Pro list.

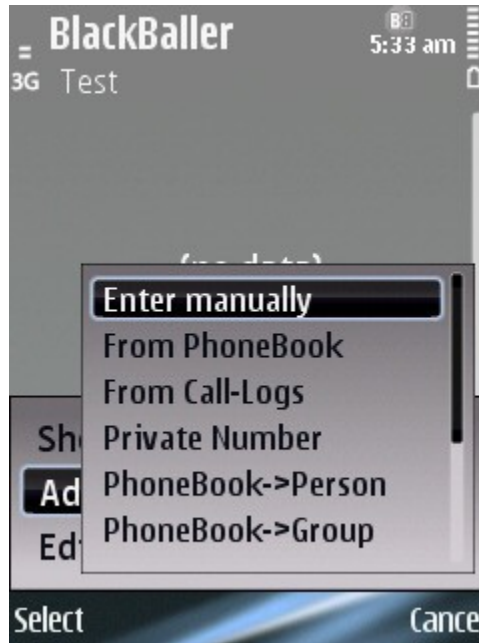
-----  
**GETTING STARTED**  
-----

The first thing you'll want to do is to create a new ENTRY or LIST to apply a actions to. In BlackBaller Pro we've made this as simple as possible From the MAIN SCREEN simply press Options -> New Entry/List -> then choose the type of Entry or List you want to create. The most flexible solution is our exclusive "BB Pro List" which allows you to setup actions for more than one number at the same time, while also applying powerful scheduling or profile rules for maximum flexibility!



However you can also choose to create Entries manually, from your Contacts, Groups, Call Logs, or Even have the action apply to Unknown, Private or Withheld numbers (Referred to As "Private Number" in the application).

Once you've choose the Entry/List type, for the BBPro List you'll now want to add numbers to the list. You can choose to add contacts, groups, numbers manually and more. Once this is done, for both Entry/List types, you'll now setup the behavior. You can do this by going Opening the List and choosing Options -> Edit to select the default List/Entry actions. You also have the option of setting up specific behavior for each List entry, which takes priority over the Default List behavior.



\*\* While filtering calls/mgs Profile Entry is given first preference followed by Time Filter then all the other entries and Pattern entry is given the last preference

## ----- SCREENS & SETTINGS OVERVIEW -----

### MAIN SCREEN -----

When you first run the application this screen will be blank. However once you have setup Lists & Entries, you will see them listed here!

Options-> Disable BlackBaller (temporarily deactivate the application)

Options-> New List/Entry (create a new BBPro list, or Entry to start setting up your call management needs)

- \* BB Pro List
- \* Enter Manually
- \* From Phone book
- \* From Call Logs
- \* Private Number (includes Withheld & unknown numbers)
- \* Phone book->Person
- \* Phone book->Group
- \* All Contacts

+ BB Pro List will have 3 Configuration options:

- Standard
- Profile Filter (The list will be activated based on a preset Profile)
- Time filter (The list will be active/deactivated based on a set time - you will need to set an Active To & From

Time)

>> Once you've created the list, you now need to add entries to it. Click the list you just created then Options->Add Entry to start adding entries to your list. You will have similar options as indicated above. Once you have setup your list entries, you have two options. To set default List handling parameters or to setup specific handling parameters for each entry in the list. To edit the entire list go to Options -> Edit.

\*\* Note that entry specific parameters will override the default list parameters.

->> If you have created a single entry, you will go straight into setting up the handling parameters for this number(s):

\* Handle Call - Reject Call/ Send SMS Reply/ Play Clip/ Play Clip+Record Msg/ Do Nothing

\* Handle SMS/MMS - Filter/ Filter+Send SMS Reply/ Do Nothing

\* SMS reply text - SMS text that is sent to the caller when the Handle Call/Handle SMS/MMS is set to Send SMS Reply.

\* Reply SMS behavior - Frequency of sending the SMS response (Send one per day/Send always)

\* Voice Clip - The file that will be played to the caller when Handle Call is set to Play Clip/Play Clip+Record Msg. Only AMR files are allowed.

\* Interval before Answer (in Seconds) - the time before the application will kick in and answer the call.

\* Enable (yes/no) - Enable this list



>> Press Done when you have finished setting up the preferences.

- In the Main screen highlight the entry you wish to edit and select Options->Edit Entry to edit the preferences. You can also do it by pressing the Joystick.

- If the entry selected is a BB Pro List then editing it will open another screen where you can add entries. This way you can group multiple entries in a list.

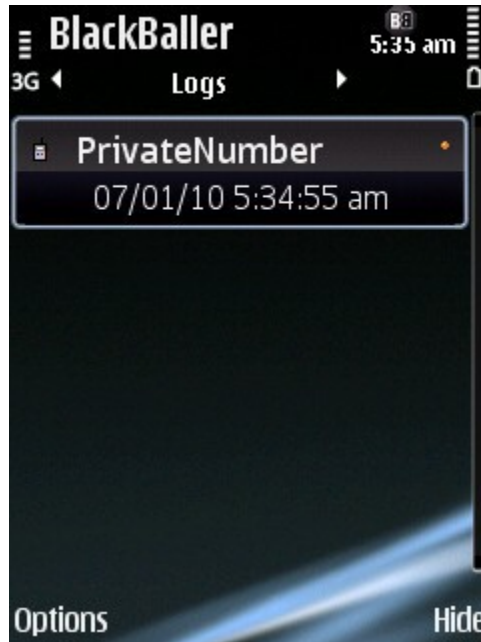
- If the entry selected is a BB Pro List then editing it will open another screen where you can add entries. This way you can group

multiple entries in a list.

To setup/edit the preference for a BB Pro List, open it by Options->Edit Entry or by Joystick in the Main screen. When the new screen comes up select Options->Edit.

### LOGS SCREEN

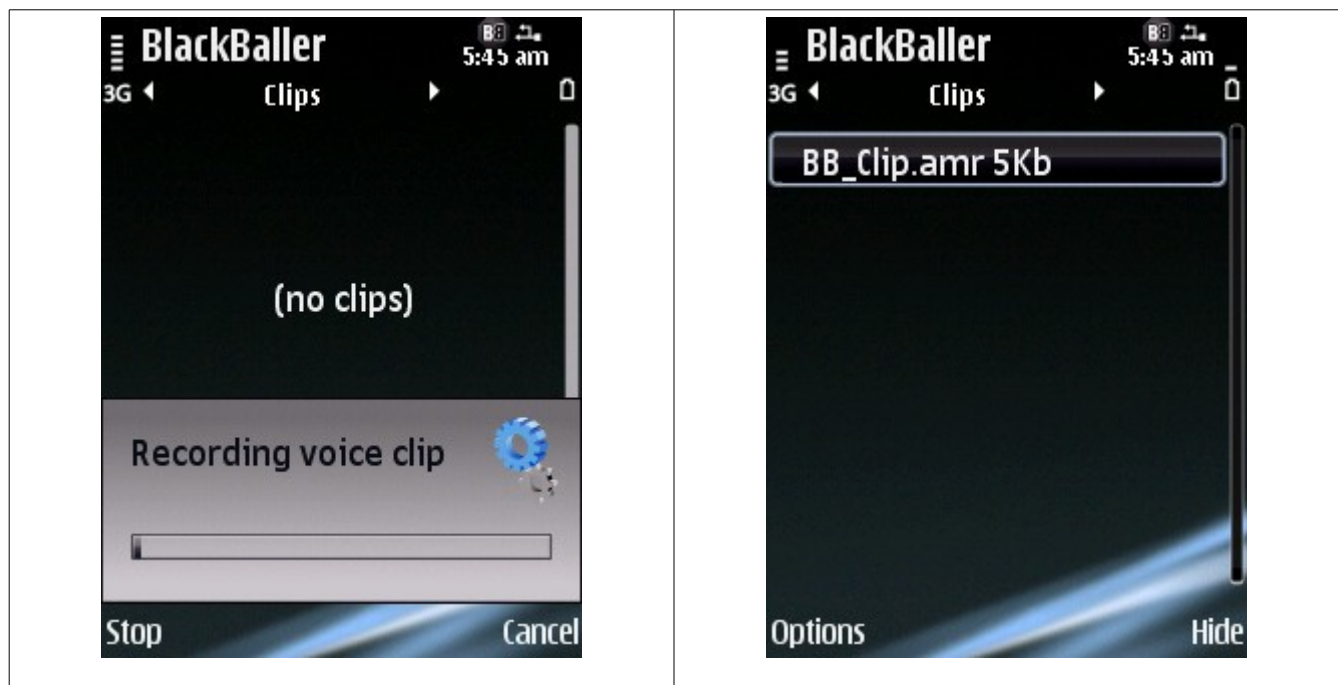
Allows you to view a log of filtered calls & Messages (with the message content)



### CLIPS SCREEN

Allows you to record voice clips that you can use for playing to the caller.

> Press Options -> Record to start recording a new clip



## SETTINGS SCREEN

---

- + Smart Sensor - Smart Sensor will prompt you to add any number that is not filtered by the BlackBaller.
- + Log Duration - Sets how many log entries are saved.
- + Voice Msg Duration - Maximum amount of time callers can record a message
- + AutoStart - Autostarts the program each time you reboot your device.
- + Password - Set the password to access the application. If not set, password protection will not be active
- + Indicator: Show the BB indicator Enabled/Disabled
- + Clip Location: The location where the recorded clips will be stored Phone Memory/Card Memory



If you have any additional support queries, please contact us directly at [info@killermobile.com](mailto:info@killermobile.com) or use the technical support form located at [www.killermobile.com](http://www.killermobile.com).

**Copyright 2010 Killer Mobile Software LLC - All rights reserved**



